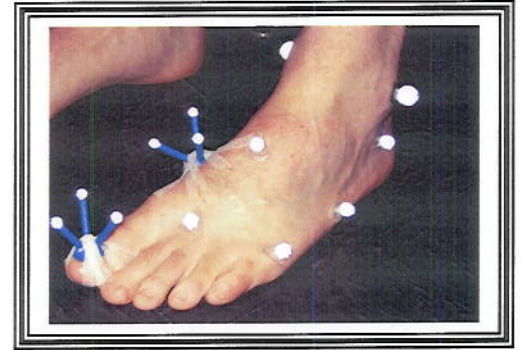


Subjects Needed

We are looking for healthy subjects, between the ages of 21 and 50, willing to volunteer for a research study designed to improve the measurement of foot motion during walking.



The study will require:

- A total of 2½ hours at the Gait Study Center (outpatient laboratory facility) at the Temple University School of Podiatric Medicine (TUSPM).
- A review of your medical history and a physical examination to determine if you qualify for the study.
- Collecting various standing and walking data using computerized sensors located on the floor.
- Placing markers on your bare foot to track the motion of your foot.

Compensation (\$25) will be granted upon the completion of this study.

PI: Dr. Jinsup Song DPM, PhD
8th and Race Street
Philadelphia, PA 19107

TEMPLE UNIVERSITY
IRB (A2) APPROVAL

MAY 03 2008

VALID FOR NO MORE
THAN ONE YEAR

For more information call Dr. Jinsup Song (215-625-5365) or stop by the TUSPM Gait Study Center